



# Thomas SATTTLER HOMES

*The Intelligent Way to a Luxury Home*

**LOCATION • LOCATION • LUXURY!**

**4264 E Dickenson Place  
Denver, CO 80222**

**(Lot 2) MLS# 8997250**

**\$ 1,155,000**

MAIN LEVEL – 1,270 SF

UPPER LEVEL – 1,390 SF

LOWER LEVEL – 1,151 SF TOTAL

TOTAL FINISHED SQ FEET = 3,511 SF

- **4 Bedroom + Loft & Study, 4.5 Baths, Master Balcony, 2-Car Tandem Garage, Finished Basement**
  - Enjoy the best of indoor/outdoor living in this thoughtfully designed, transitional home.
    - Inspired use of exterior materials such as natural stone, brick and stucco
    - Enjoy personalizing your home with endless finish options to complement your lifestyle in our exclusive *Experience Center*
      - Expansive rooms with 9' ceilings on Main and Upper levels
      - Open Kitchen with Stainless Steel **Bosch** appliance package
    - Your choice of Granite or Quartz countertops in the Kitchen and all Bathrooms
      - All **Kohler** plumbing fixture package
    - Full-overlay 42" upper **Yorktowne** cabinetry including dovetail drawers, soft close feature, and a variety of wood stains from which to choose
      - 42" Horizontal, Corner Fireplace in Great Room
    - 4" Oak Hardwood flooring, finished on-site in Foyer, Powder Room, Great Room, Dining Area, Kitchen and Nook

**It's all here for you at DICKENSON PLACE ~ THE PLACE YOU WANT TO BE.**

For more information, contact Trent at 720-275-4314 or [trent@sattlercolorado.com](mailto:trent@sattlercolorado.com)

[ThomasSattlerHomes.com](http://ThomasSattlerHomes.com)

## The Intelligent Way to a Luxury Home



All prices, features, and dimensions are subject to change without notice



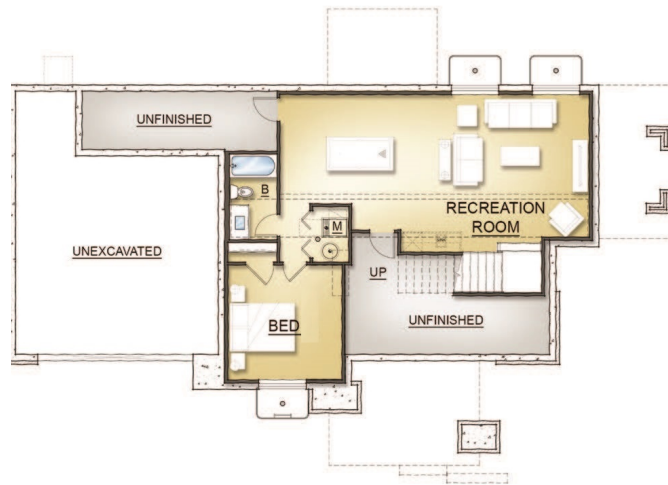
Thomas Sattler Homes presents:  
**DICKENSON PLACE**



**MAIN LEVEL | 1,270 SQ FT**



**UPPER LEVEL | 1,390 SQ FT**



**LOWER LEVEL | 1,151 SQ FT**

For more information, contact Trent at 720-275-4314 or [trent@sattlercolorado.com](mailto:trent@sattlercolorado.com)

Square footage representations are approximate and should be verified.