



*Thomas*  
**SATTTLER HOMES**  
*The Intelligent Way to a Luxury Home*

**8033 Galileo Way  
Marseille Plan**

PRICE \$1,699,000

UPPER LEVEL – 1674 SF

MAIN LEVEL – 2870 SF

LOWER LEVEL – 2412 SF

TOTAL FINISHED = 4544 SF

- ❖ This 2-Story Marseille Plan offers breathtaking views over the 2nd Fairway
- ❖ 5 Bedrooms and 5.5 Bathrooms make this home an entertainer's dream
  - ❖ Main Floor Master Retreat with Spa Bath features access to patio and views that capture the tranquility of the community.... just relax and watch the deer wonder by.
- ❖ Rare Main Floor Guest Suite offers privacy and convenience for visitors
  - ❖ Generous 4-car garage holds your cars, golf cart & plenty of toys
    - ❖ An amazing Kitchen with gorgeous, custom cabinets makes cooking and entertaining a pleasure
    - ❖ The Great Room opens to an expansive outdoor living space featuring a custom stone fireplace
- ❖ Exceptional living space on the Upper Level with 3 Bedrooms, 3 Bathrooms, a Loft area and a huge Recreation Space with a Balcony for another look at those awesome views!
- ❖ Low-maintenance exterior includes Pella windows, stone and stucco finishes

303-771-5995 | [ThomasSattlerHomes.com](http://ThomasSattlerHomes.com)

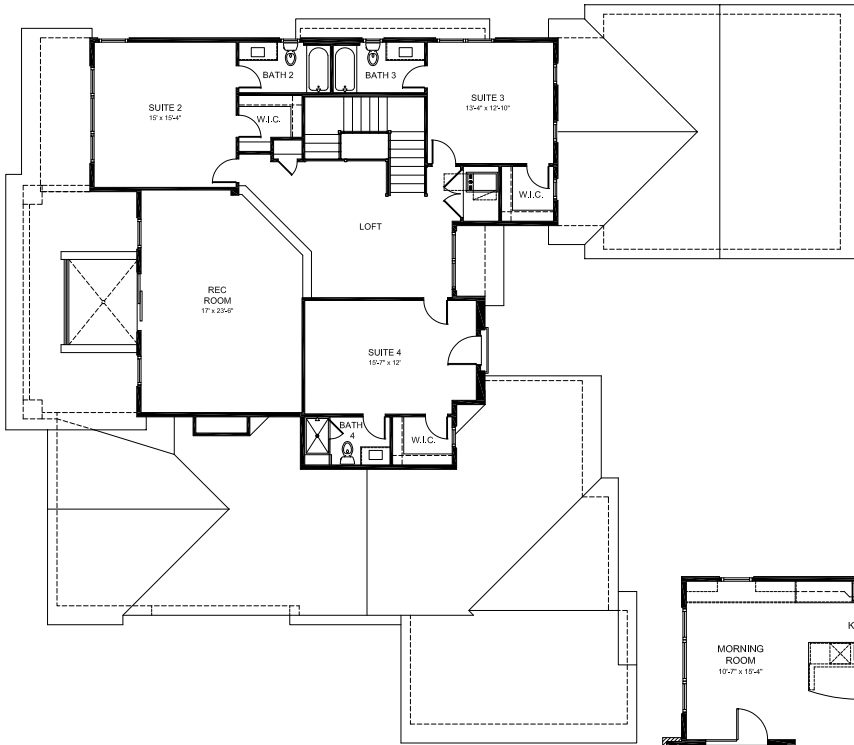
**The Intelligent Way to a Luxury Home**



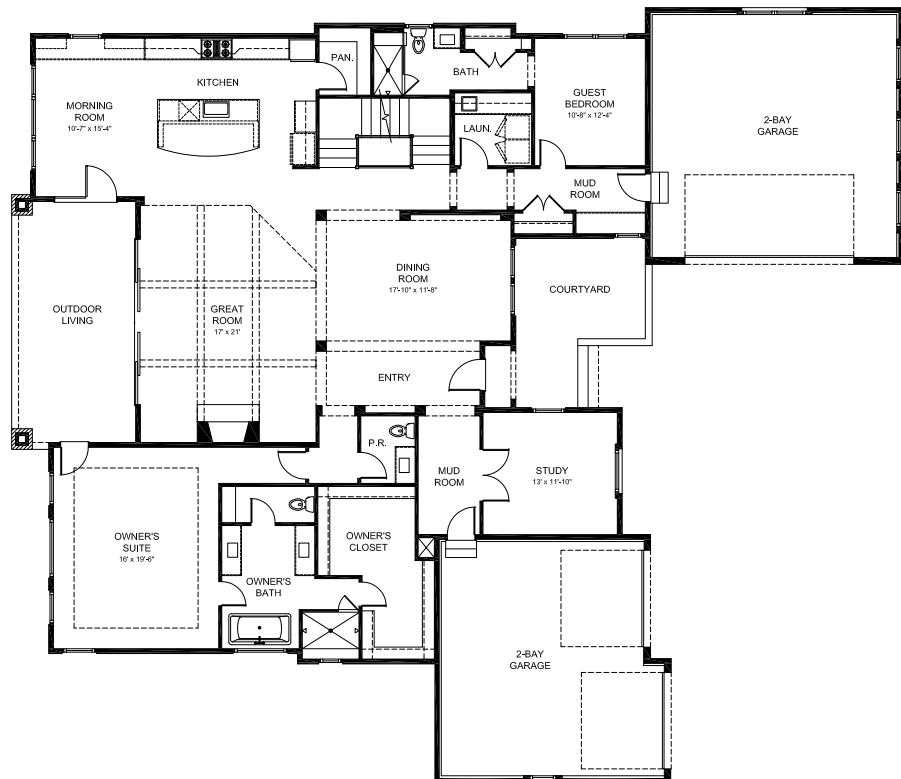
All prices, features, and dimensions are subject to change without notice

# Thomas Sattler Homes

European Collection • Marseille Plan



Upper Level Floor Plan  
1,674 Sq. Ft.



Main Level Floor Plan  
2,870 Sq. Ft.

For more information, contact us at 303-771-5995 or [info@sattlercolorado.com](mailto:info@sattlercolorado.com)  
[ThomasSattlerHomes.com](http://ThomasSattlerHomes.com)